



WORLD LEADER IN FLEXIBLE SPACE MANAGEMENT



Unispan[®]

SELF-SUPPORT SYSTEM

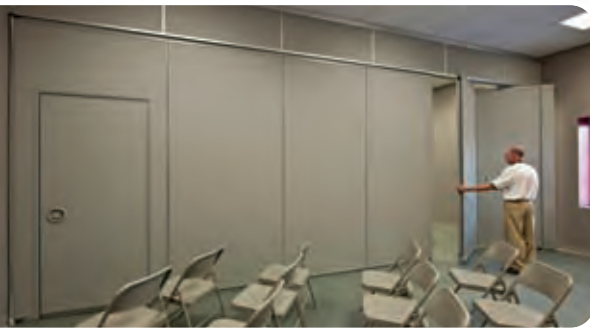
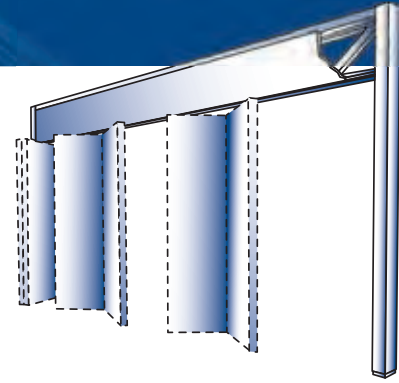
*Now Operable and Accordion
Partitions can be used in
buildings without the need
for additional overhead
structural support*



Operable partitions are the most flexible way to divide spaces in schools, churches, offices and hotels. Yet some buildings cannot use traditional floor to ceiling panels because the partitions are mounted on track that is suspended from overhead building structures. Often, buildings are not designed to support the weight of the partition, essentially eliminating the possibility of using operable partitions. Until now...

Unispan[®]

HUFCOR



Restaurants are installing Unispan to create separate meeting rooms and banquet areas.

Training Centers and Churches are installing Unispan in their facilities so small groups can meet in acoustically isolated rooms.

Schools are using Unispan to provide more classroom space.

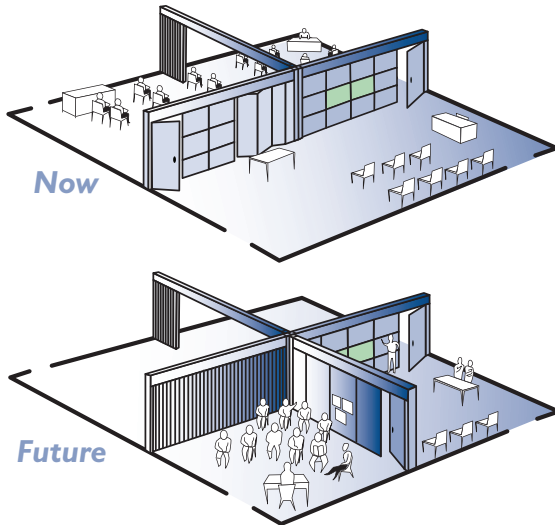
Unispan[®] is an independent support system used with Hufcor operable or accordion partitions for

quick, easy room division. It was developed to enable facilities to install partitions in buildings with inadequate overhead structure to support the weight of partitions. Unispan consists of a horizontal truss and two 2-1/2" x 5" [63.5 x 127] aluminum columns that support a movable partition independent of the building. The columns are connected to floor plates that distribute the load of the system at the floor. Bracing is needed for lateral stability only. The floor supports the weight of the system and must support a maximum of 360 psi at each post. The Unispan truss and built-in track assure smooth partition movement across wide span openings. The system can be moved to another location to accommodate future needs.

Older buildings benefit from Unispan because it permits installation of movable partitions without costly reinforcing modifications to the building structure. It can replace existing non-load bearing walls, and therefore is especially suited for remodeling. Where space above the ceiling permits, Unispan can be recessed so that the bottom of the truss is flush with the ceiling. Unispan can be used in openings 39'9" [12116 mm] wide. Height is limited by the weight of the panels. Operable panels can weigh no more than 400 lbs. [181 kg] each.

Paired panel operable partitions and accordion doors are the most frequently used partitions with Unispan. Also available is a side stack track extension for use with omni-directional panels. If desired, the panels in the Unispan package can incorporate dry erase or chalk markerboard or tack board working surfaces. The panel and header panel finish can match or contrast with the room décor.

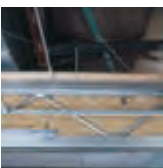
FOR A QUOTE AND/OR FREE INSPECTION TO REVIEW YOUR SPACE NEEDS, CALL HUFCOR AT 1-800-542-2371 EXT. 214 OR SEARCH WWW.HUFCOR.COM FOR THE DISTRIBUTOR NEAREST YOU.



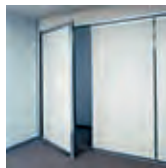
Unispan may be relocated should your space or room division needs change in the future.

Unispan Features:

- Pre-engineered structural support designed specifically for the operable wall
- Zone 4 seismic ratings
- Reduces costs compared to traditional pre-punched I-beam steel structure
- Reduces costs of installation, especially in multi-story commercial spaces, since the system may be manufactured in sections that fit into most elevators
- Track system can integrate with ceilings, requiring less time for ceiling installers; the bottom cord of the truss system is the partition's track
- Built-in headers form a baffle above the partition, eliminating the need for another sub to install a plenum barrier



Truss System – Truss is insulated to prevent sound passage between rooms.

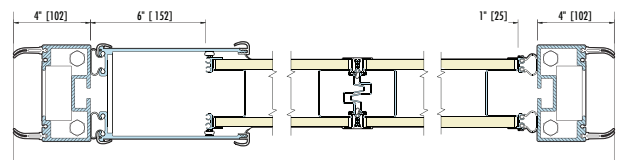


Optional Pivot Panel – used with operable partitions. Attaches to Unispan post for access to adjacent room.

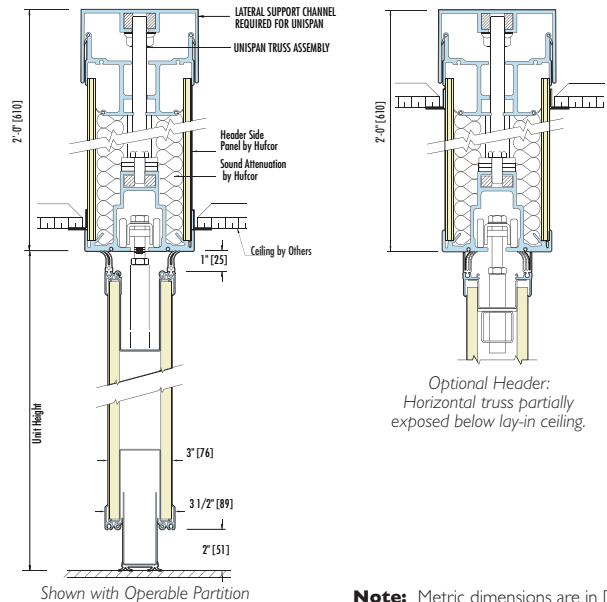
The uses of Unispan® Self-Support System are limitless. Here are just a few:

- Divide a classroom
- Add a small computer room
- Turn a cafeteria into classrooms
- Add a meeting room in a restaurant
- Turn a banquet hall into smaller rooms
- Add a meeting room in an office
- Add a training room in an office
- Create Sunday school classrooms
- Create daycare rooms

UNISPAN HORIZONTAL SECTION



UNISPAN VERTICAL SECTIONS



Note: Metric dimensions are in []



NEW! Summit® vertical lift operable wall system lifts and stores panels above the ceiling with the touch of a button – eliminating the need for floor storage space.

Hufcor offers the widest variety of space division products from a single source.

In addition to operable partitions, we offer operable glasswalls, accordion doors, and vertical lift partitions. We specialize in custom engineering products when “standard” won’t do for your needs. Visit our website to learn more about how Hufcor can help solve your space division problems. www.hufcor.com



Hufcor steel-framed **operable partitions** set the standard for quality, durability, sound separation, and ease of movement. Standard or custom finishes allow the partition to match or complement your décor.



The drama and beauty of glass enhances any space. Hufcor’s **glasswalls** are ideal for areas where a physical, but not a visual barrier is needed. They allow the light to come in and provide the flexibility to reconfigure space.



Hufcor **accordion** folding partitions are the fastest, easiest way to divide spaces – simply pull the door across the opening and latch. Optional tracks and accessories enable doors to move on curves and/or intersect with other doors to create multiple rooms.



For outside doors, consider vertical-lift **Hydrau-Lift Bi-Fold** doors. Hydrau-Lift is the only bi-fold system on the market to have been tested for air, water and wind loads.



Supported by Unispan, **Smartition™** rotating wall system enhances the use of interactive whiteboard technologies. Smartition’s data and electric cabling allows classes to be taught with the same or different curriculum by the same teacher.



WORLDWIDE HEADQUARTERS
 PO Box 591 / 2101 Kennedy Road, Janesville, WI 53547
 Toll-Free: 800-542-2371, ext. 214 Telephone: 608-756-1241
 Fax: 608-758-8253 E-mail: info@hufcor.com
www.hufcor.com



IT'S ALL IN THE BOOK

More details on all Hufcor products are available in the Architectural Product Manual. Call your local rep today to receive a complimentary copy.



The quality systems of Hufcor’s U.S. manufacturing facilities are registered to the ISO 9001 standards.



*USGBC and related logo is a trademark owned by the U.S. Green Building Council and is used by permission.



Hufcor offers continuing education programs for AIA members. Contact your Hufcor representative for details.