

4. Installing the IMMI calculator (formerly IMMI-Client) – only if part of the delivery!

Depending on the configuration of the software you purchased or already own, the delivery contains two CD-ROM for each IMMI-Calculator (formerly IMMI Client). The IMMI-Calculator executable files are contained on the disk labelled **Calculator**. The second license is labelled **Calculator (License File)**.

- ⏪ Follow the instruction of 1 to install the Calculator. The default installation path is **C:\Program Files\IMMI2009_Calculator**.
- ⏪ If the calculator is to be installed on the same computer as the previously installed IMMI licence, then there is no need to re-install the hardkey driver. On any computer on which old or no licenses of IMMI are installed, please follow the above instructions for the hardkey driver installation.
- ⏪ Just as the full license, the IMMI-Calculator license must be activated. See above to learn how to copy the file **OPTIONS.DAT** from the CD-ROM labelled **Calculator (License File)**.

Special installation note for IMMI Server- Hardkey (green)

Network installations of IMMI require installation of the so-called **IMMI Server Hardkey**. Connect the USB server hardkey to any computer connected to your network. Install the special driver on this computer. Together server hardkey and driver manage the simultaneous execution of the acquired number of IMMI licenses.

A single set-up software **HLSW32.EXE** is used for all current Windows 32-bit and 64-bit operating systems. **HLSW32.EXE** will be found in the sub-folder **Hardlock** of the IMMI installation folder after installation of the single user-key driver. Double-click on **HLSW32.EXE** to start the fully automated installation.

Hint: On each program start, IMMI scans the whole network for the server hardkey. Once found, the number of instances of IMMI already running on that network is checked. This process can take several seconds depending network size. The server key must remain accessible at all times to ensure proper operation of IMMI. Don't shut down the computer. Don't remove the hardkey.

Wölfel International Sales Office
Eupen

Vervierser Str. 43
4700 Eupen/Belgium

Phone: +32 87 5610-02
Fax: +32 87 5610-04

Email: wms.international@woelfel.de



IMMI



Installation instructions

1. Installing IMMI (single-user installation; blue hardkey)

Caution: Administrator rights required for installation of IMMI!

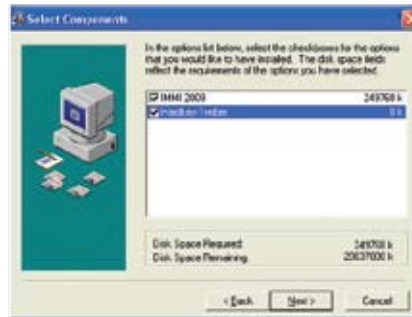
Files will be copied to both the **Program Files** and the **Windows** folder. These operations require administrator rights. **If you do not have or are unsure about administrator rights on your computer, please call for a system administrator to install both IMMI and the hardkey driver!**

IMMI is delivered on two CDs: one labelled with the **license number** and the second one labelled **License** (white characters on blue ground).

- ☞ If your computer is shut down, start your computer and wait until MS Windows operating is running.
- ☞ Insert the CD-ROM with the license number into the CD-ROM drive. Close the CD-ROM drive.
- ☞ An automatic installation routine now starts which installs the software on your computer. Follow the on-screen instructions during the installation process.
- ☞ First select the language for the installation of IMMI and click **OK**.
- ☞ Make sure no other IMMI is running on your computer. Click **Next**.
- ☞ Carefully read the license agreement. If you agree tick **I agree** and click **Next**. If you tick **I don't agree** and click **Cancel** the installation routine will abort.

Hint: Normally, the installation should start automatically after inserting the CD-ROM. If not, please choose the CD-ROM drive and execute **setup.exe** manually.

- ☞ Activate both **IMMI 2009** and **Hardkey driver** in the **Select components** dialogue (unless you are sure that a valid hardkey driver is already installed – in this case IMMI 2009 will be enough).
- ☞ Click **Next**. The setup routine suggests installing IMMI in the following installation folder **C:\Program Files\IWIN2009**. For any other folder use the **Browse...** button to select the desired folder. Click **Next**.
- ☞ Select the name of the Program Manager group where all IMMI items should be placed. Defaultname: **IMMI 2009**. You may choose any other existing or non-existing Program Manager group. Click **Next**.
- ☞ You are now ready to install IMMI 2009. Click **Next**, and the files will copied onto your hard disk.



Hint: The setup routine copies all IMMI program files and all manuals, sample files and test cases onto your hard disk.

- ☞ Once all files are copied onto your hard disk click **Finish** to finalise the installation process of IMMI.

☞ If you selected **Hardkey driver** in the **Select components** dialogue, the installation of the hardkey drive will now start automatically. For single user hardkeys (blue hardkeys) move to **2 Installing the single-user USB Hardkey driver**.

☞ If you did not select the **Hardkey driver** in the **Select components** dialogue, the installation of all IMMI components is now finished. Move to **3 Installing the License File**.

2. Installing the single-user USB Hardkey driver (for all blue hardkeys)

- ☞ An automatic setup routine is launched and guides you through the whole installation process.
- ☞ Select the language of the setup routine and click **OK**.
- ☞ The hardlock device driver installation routine starts. Make sure the Windows operating system installed on your computer is in the list. Click **Next**.
- ☞ All driver files will be installed. Click **Finish** to finalise the installation process of the hardkey driver.
- ☞ USB keys: Insert your USB-hardkey now. If you are installing a new IMMI license for the first time, the USB key is part of the IMMI delivery. For update installations use your existing hardkey.
- ☞ Update of older licenses only: Insert your parallel port key now. Note: New IMMI licenses are equipped with USB hardkeys.

Both IMMI software and hardkey drivers are now properly installed. Last step: activating your license.

3. Installing the license file

IMMI must be activated with a license code.

- ☞ Remove the program installation CD-ROM from the CD-ROM drive. Insert the CD-ROM labelled **License** (white characters on blue ground) in the CD-ROM drive of your computer. Close the CD-ROM drive.
- ☞ The content of the CD-ROM will be displayed automatically in the file list of the Explorer.

Hint: If the content of the CD-ROM is not displayed automatically, use the Explorer to view the content of the CD-ROM. The CD-ROM contains a file named **OPTIONS.DAT**.

- ☞ Copy the file **OPTIONS.DAT** from the CD-ROM into the IMMI installation folder **IWIN2009** (default path: **C:\Programme\IWIN2009**; or the previously chosen installation path or folder).
- ☞ IMMI is now activated and ready for use.

How to copy a file using Explorer?

- ☞ In the Explorer's file list right-click on **OPTIONS.DAT**. After the pop-up menu opens, click **Copy**.
- ☞ Navigate to the IMMI installation folder (default path: **C:\Programme\IWIN2009**; or the previously chosen installation path or folder). Right-click on the folder name. Click **Paste** in the pop-up menu.
- ☞ You've finished copying the license file. Your IMMI license is now activated.