

Gypsum fibre-board

Gypsum fibre-board

DAMTEC[®] system

DAMTEC[®] system

Timber floor boards

Air gap

Filling material (e.g. compacted gravel, sand or clay)

Formwork

Lathes

e.g. plaster on base board

DAMTEC[®] system

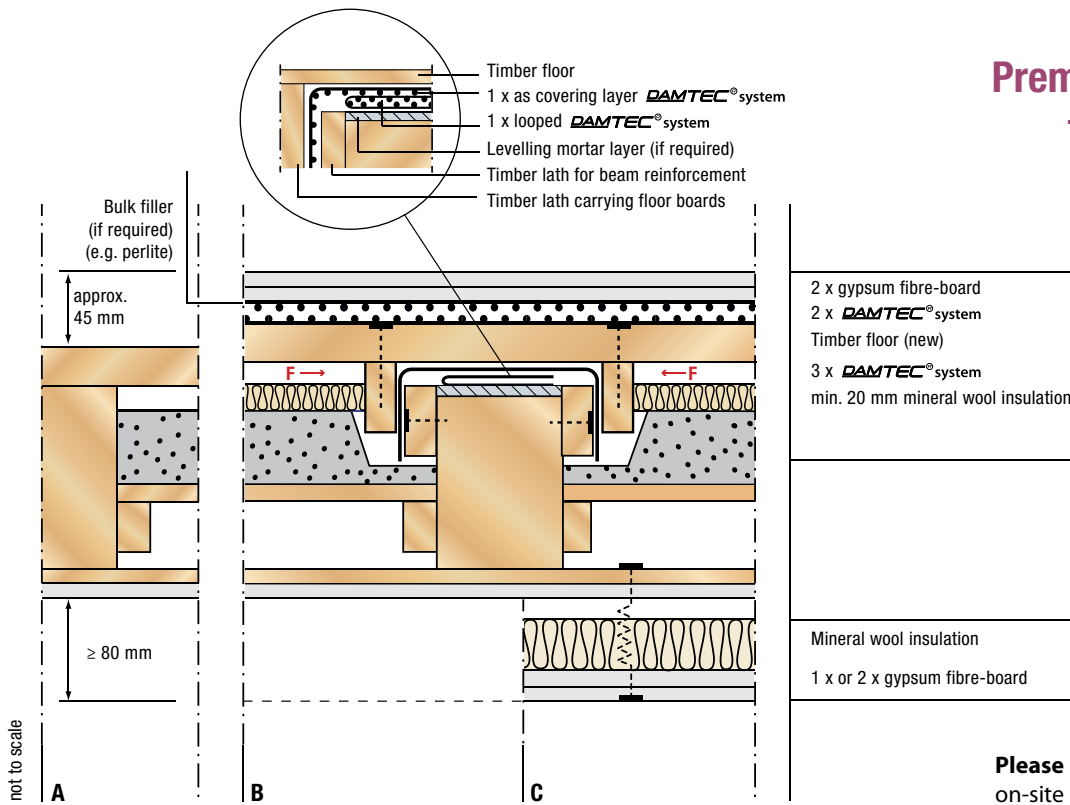
The rubber granule mat for impact sound insulation systems.

Advantages at a glance:

- minimal build height
- low weight
- low sound propagation
- excellent functionality and design safety

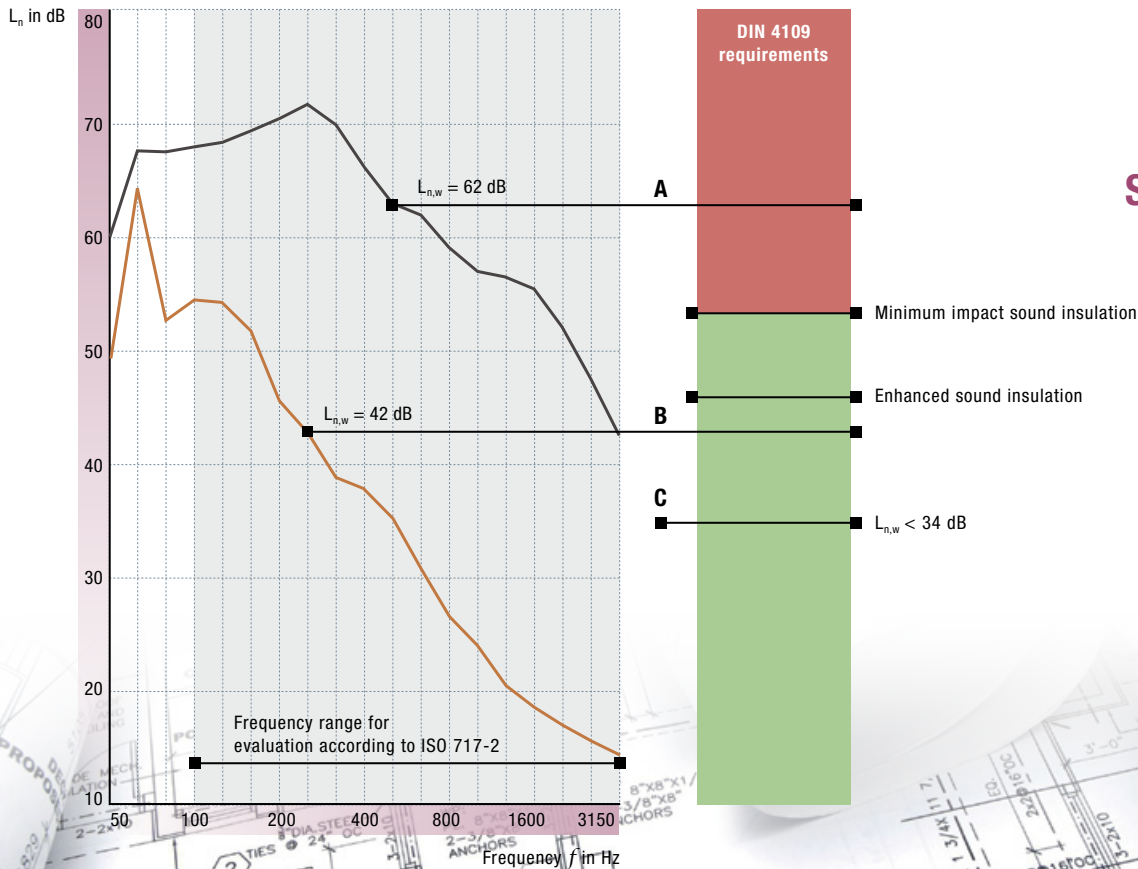
Damtec[®] system is the premier solution for impact sound insulation for installation under floating screeds in timber constructions. Thanks to its granule surface structure, it offers exceptionally effective insulation in the low frequency range. The product is the ideal solution for installation on timber beam floors where impact sound insulation is of primary importance. **Damtec**[®] system is particularly suitable for renovation projects.

Premium timber beam floor construction



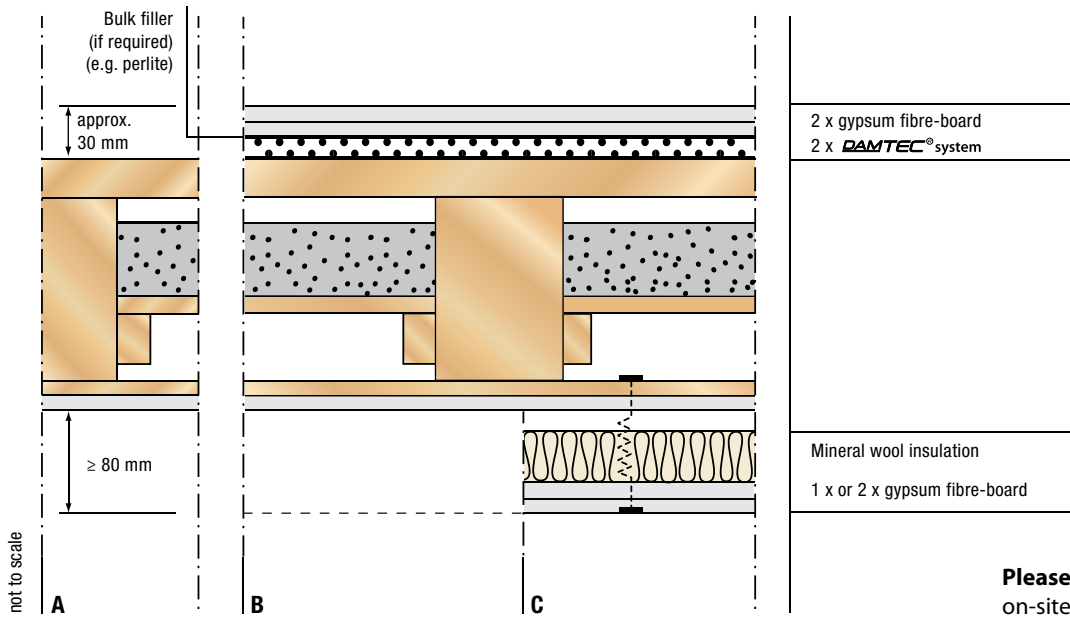
Please note: On request, we perform on-site measurements and design customised solutions. These services are available at a surcharge.

On-site sound measurement



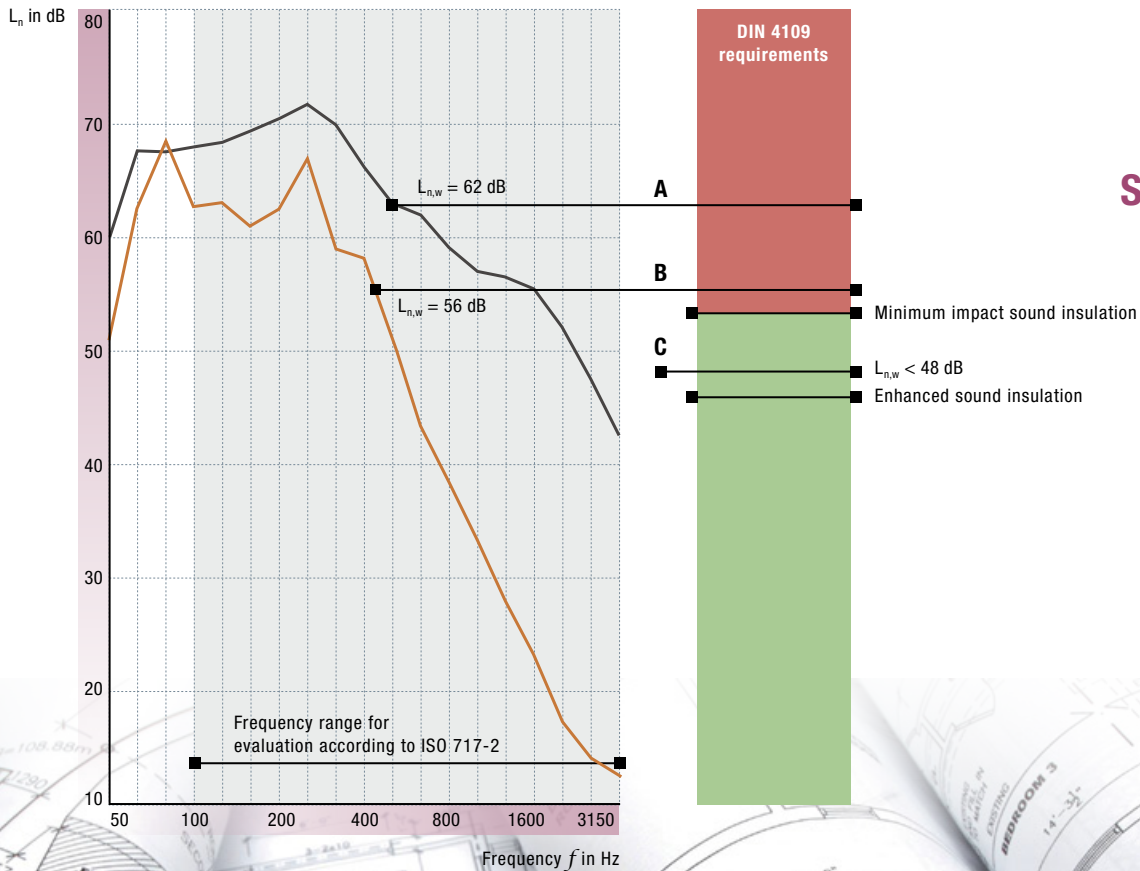
Standard impact sound level

Standard timber beam floor construction

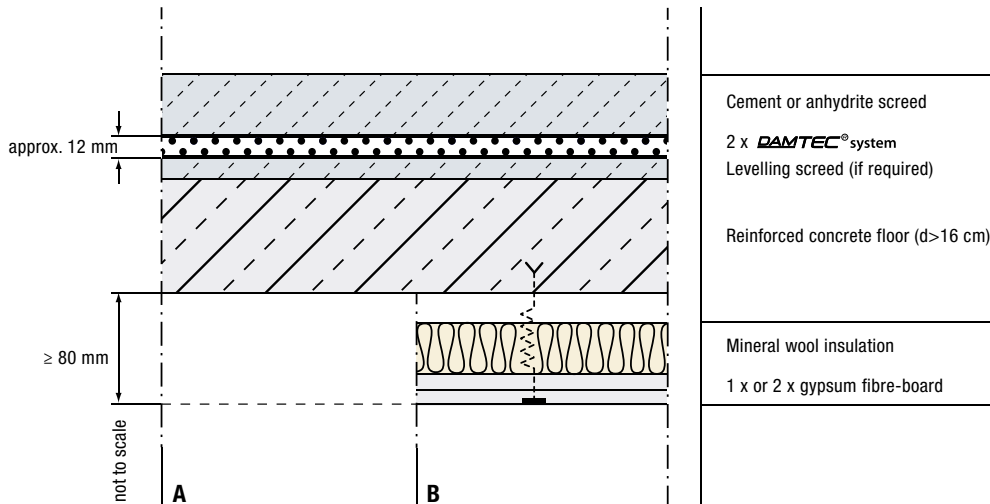


Please note: On request, we perform on-site measurements and design customised solutions. These services are available at a surcharge.

On-site sound measurement



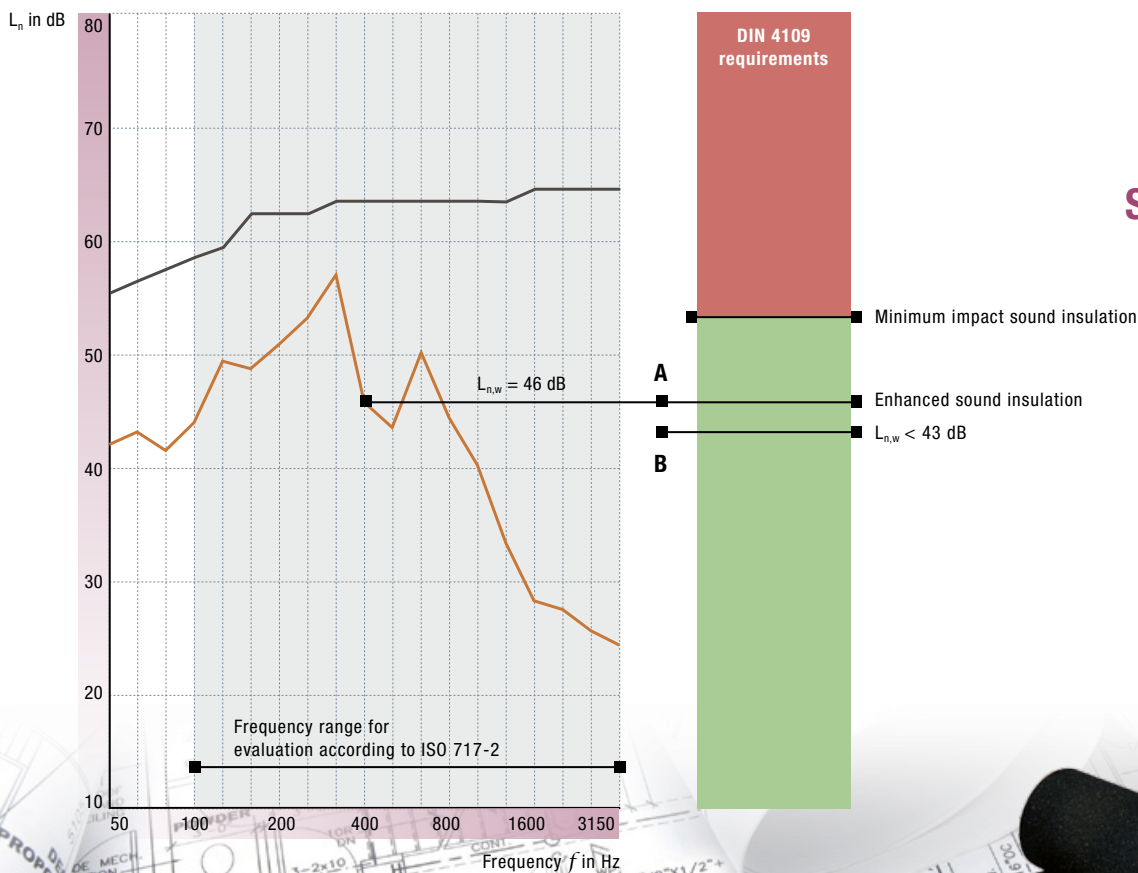
Standard impact sound level



Solid floor construction

Please note: On request, we perform on-site measurements and design customised solutions. These services are available at a surcharge.

On-site sound measurement



Standard impact sound level



Gummiwerk
KRAIBURG RELASTEC GmbH
Fuchsberger Strasse 4
D-29410 Salzwedel, Germany

Sales & advice:

Phone +49 (0) 86 83 - 701 - 142
Fax +49 (0) 86 83 - 701 - 4 142
damtec@kraiburg-relastec.com
www.kraiburg-relastec.com/damtec



No liability accepted for errors or omissions.
Specifications subject to changes without prior notice.